

Congress on whether the Federal work force is being adequately protected against political abuses and prohibited personnel practices.

Regional Offices—Merit Systems Protection Board

Region	Address	Director	Telephone
Atlanta Regional Office	401 W. Peachtree St. NW., Atlanta, GA 30308	Thomas J. Lanphear	404-730-2755
Central Regional Office	31st Fl., 230 S. Dearborn St., Chicago, IL 60604	Martin W. Baumgaertner	312-353-2923
Dallas Regional Office ..	Rm. 620, 1100 Commerce St., Dallas, TX 75242	Sharon F. Jackson	214-767-0555
Northeastern Regional Office.	Suite 1700, 1601 Market St., Philadelphia, PA 19103.	William L. Boulden	215-597-9960
Washington Regional Office.	Suite 205, 1800 Diagonal Rd., Alexandria, VA 22314.	Raphael Ben-Ami, <i>Acting</i>	703-756-6250
Western Regional Office	Suite 400, 4th Fl., 250 Montgomery St., San Francisco, CA 94104.	Amy Dunning	415-904-6772

Field Offices—Merit Systems Protection Board

Region	Address	Chief Administrative Judge	Telephone
Denver	Suite 318, 165 S. Union Blvd., Lakewood, CO 80228.	Maxanne Witkin	303-969-5101
New York	Rm. 3137A, 26 Federal Plz., New York, NY 10278	Arthur S. Joseph	212-264-9372

For further information, contact the Merit Systems Protection Board, 1615 M Street NW., Washington, DC 20419. Phone, 202-653-7200 or 800-209-8960. TDD, 800-877-8339. Fax, 202-653-7130. E-mail, mspb@mspb.gov. Internet, www.mspb.gov.

NATIONAL AERONAUTICS AND SPACE ADMINISTRATION

300 E Street SW., Washington, DC 20546
 Phone, 202-358-0000. Internet, www.nasa.gov.

Administrator	MICHAEL D. GRIFFIN
Deputy Administrator	SHANA DALE
Associate Administrator	CHRISTOPHER SCOLESE
Associate Deputy Administrator	CHARLES SCALES
Chief of Staff	PAUL MORRELL
Deputy Chief of Staff/White House Liaison	JANE CHERRY
Assistant Associate Administrator	CHRISTYL JOHNSON
Assistant Administrator for External Relations	MICHAEL F. O'BRIEN
Associate Administrator for Aeronautics Research Mission Directorate	JAIWON SHIN
Associate Administrator for Exploration Systems Mission Directorate	RICHARD J. GILBRECH
Associate Administrator for Institutions and Management	THOMAS S. LUEDTKE
Assistant Administrator for Diversity and Equal Opportunity	BRENDA R. MANUEL
Assistant Administrator for Human Capital Management	TONI DAWSEY
Assistant Administrator for Infrastructure and Administration	OLGA DOMINGUEZ
Assistant Administrator for Internal Controls and Management Systems	LOU BECKER
Assistant Administrator for Procurement	BILL MCNALLY

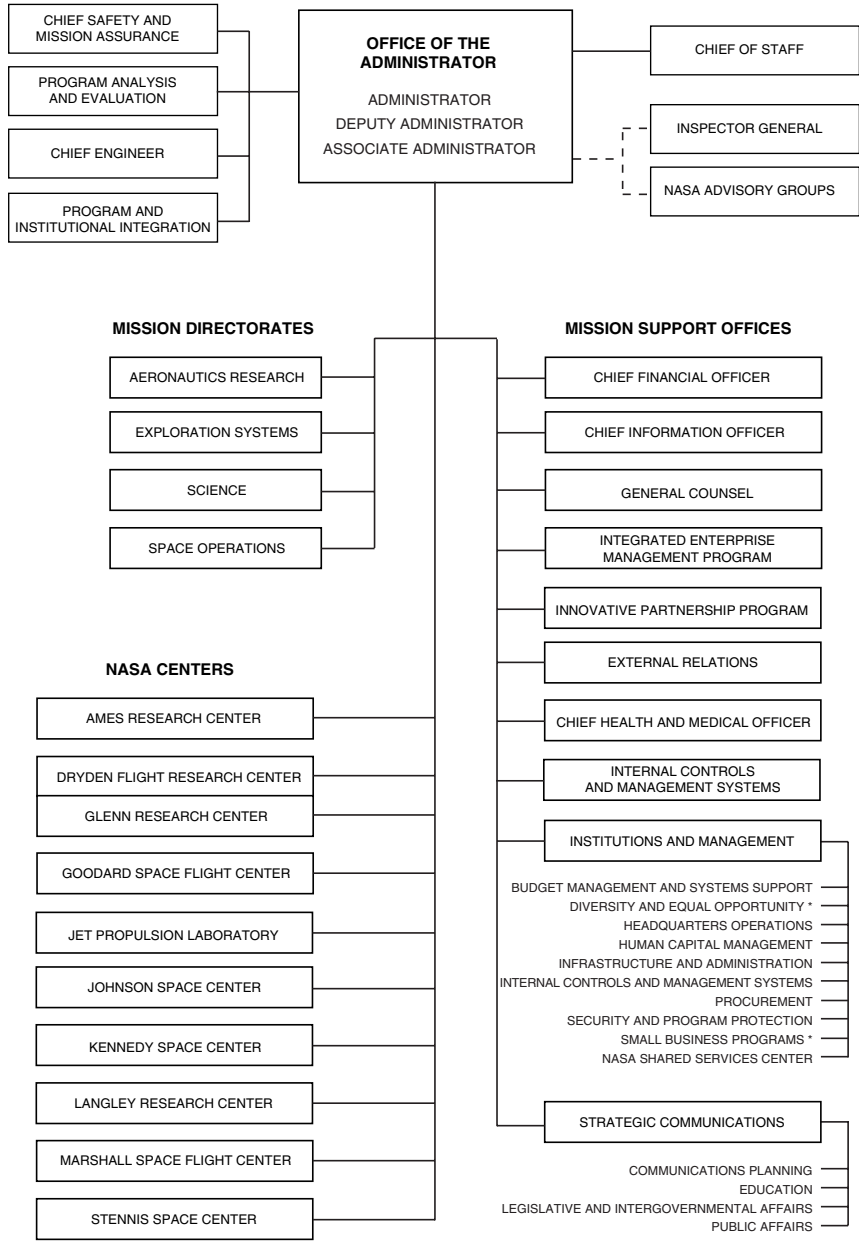
Assistant Administrator for Security and Program Protection	JACK FORSYTHE, <i>Acting</i>
Assistant Administrator for Small Business Programs	GLENN A. DELGADO
Executive Director, NASA Shared Services Center	RICHARD E. ARBUTHNOT
Associate Administrator for Program Analysis and Evaluation	SCOTT PACE
Headquarters Operations	CHRIS JEDREY
Associate Administrator for Science Mission Directorate	ED WEILER
Associate Administrator for Space Operations Mission Directorate	WILLIAM GERSTENMAIER
Chief Engineer	MICHAEL RYSCHKEWITSCH
Chief Financial Officer	RONALD R. SPOEHEL
Chief Health and Medical Officer	RICHARD S. WILLIAMS
Chief Information Officer	JONATHAN PETTUS
Chief Safety and Mission Assurance Officer	BRYAN O'CONNOR
Chief of Strategic Communications/Assistant Administrator for Communications Planning	ROBERT HOPKINS
Assistant Administrator for Education	JOYCE L. WINTERTON
Assistant Administrator for Legislative and Intergovernmental Affairs	WILLIAM BRUNER
Assistant Administrator for Public Affairs	DAVID MOULD
Director, Innovative Partnerships Program	DOUGLAS A. COMSTOCK
Director, Integrated Enterprise Management Program	BOBBY L. GERMAN
Director, Office of Program and Institutional Integration	RICHARD J. KEEGAN
General Counsel	MICHAEL C. WHOLLEY
Inspector General	ROBERT W. COBB
NASA Centers	
Director, Ames Research Center	S. PETE WORDEN
Director, Dryden Flight Research Center	KEVIN L. PETERSEN
Director, John H. Glenn Research Center	WOODROW WHITLOW
Director, Goddard Space Flight Center	ARTHUR OBENSCHAIN, <i>Acting</i>
Director, Lyndon B. Johnson Space Center	MICHAEL COATS
Director, John F. Kennedy Space Center	WILLIAM W. PARSONS
Director, Langley Research Center	LESA ROE
Director, George C. Marshall Space Flight Center	DAVID A. KING
Director, John C. Stennis Space Center	ROBERT CABANA
Director, Jet Propulsion Laboratory	CHARLES ELACHI

[For the National Aeronautics and Space Administration statement of organization, see the *Code of Federal Regulations*, Title 14, Part 1201]

The mission of the National Aeronautics and Space Administration is to pioneer the future in space exploration, scientific discovery, and aeronautics research.

The National Aeronautics and Space Administration (NASA) was established by the National Aeronautics and Space Act of 1958, as amended (42 U.S.C. 2451 *et seq.*).

NATIONAL AERONAUTICS AND SPACE ADMINISTRATION



* In accordance with law or regulation, the offices of Diversity and Equal Opportunity and Small Business Programs maintain reporting relationships to the Administrator and Deputy Administrator.

Activities

Aeronautics Research Directorate The Aeronautics Research Mission Directorate conducts research and technology activities to develop the knowledge, tools, and technologies to support the development of future air and space vehicles and to support the transformation of the Nation's air transportation system. The Directorate's programs focus on cutting-edge, fundamental research in traditional aeronautical disciplines, as well as emerging fields with promising applications to aeronautics, and are conducted in conjunction with industry, academia, and other U.S. Government departments and agencies, including the Federal Aviation Administration and the Department of Defense.

For further information, call 202-358-2047.

Space Operations Mission Directorate

The Space Operations Mission Directorate (SOMD) provides the foundation for NASA's space program—space travel for human and robotic missions, in-space laboratories, and the means to return data to Earth. SOMD is responsible for many critical enabling capabilities that make possible much of the science, research, and exploration achievements of the rest of NASA. This is done through three themes: the International Space Station, Space Shuttle, and Space and Flight Support.

The International Space Station is a complex of laboratories maintained to support scientific research, technology development, and the exploration of a permanent human presence in Earth's orbit.

The Space Shuttle, first launched in 1981, provides the only current capability in the United States for human access to space. The Shuttle's focus over the next several years will be the assembly of the International Space Station after which it will be phased out of service.

The Space and Flight Support theme encompasses space communications, launch services, and rocket propulsion testing. Space communications consists of five major elements: the Space

Network or Tracking and Data Relay Satellite System, the Deep Space Network, the Near Earth Network, the NASA Integrated Services Network, and NASA Spectrum Management. The launch services program focuses on acquisition of commercial launch services for NASA's space and Earth science missions. The rocket propulsion testing program supports the flight readiness of various liquid propulsion engines and acts as a test bed for rocket engines of the future.

For further information, call 202-358-2015.

Science Mission Directorate The Science Mission Directorate carries out the scientific exploration of the Earth, Moon, Mars, and beyond, charting the best route of discovery. The Directorate manages and sponsors research, flight missions, advanced technology development, and related activities. It works to expand our understanding of the Earth and the Sun and the Sun's effect on the solar system environments; explore the solar system with robots to study its origins and evolution including the origins of life within it; and explore the universe beyond, from the search for planets and life in other solar systems to the origin, evolution, and destiny of the universe itself.

For further information, call 202-358-3889 or visit www.nasascience.nasa.gov.

Exploration Systems Mission Directorate

The Exploration Systems Mission Directorate (ESMD) is responsible for creating a suite of new human exploration capabilities called Constellation Systems. This system includes a crew exploration vehicle, transportation, lunar and planetary body exploration, in-space support, and ground-based support systems. The ESMD also includes robotic missions to the Moon and research payloads that use the International Space System, as well as ground-based facilities.

For further information, call 202-358-7246.

NASA Centers

Ames Research Center The Ames Research Center, located in California's

Silicon Valley, provides solutions to NASA's exploration questions through interdisciplinary scientific discovery and innovative technology systems. The Center provides leadership in astrobiology, information science, small spacecraft, advanced thermal protection systems, human factors, and the development of new tools for a safer and more efficient national airspace. It also develops unique partnerships and collaborations, exemplified by NASA's Astrobiology Institute, the NASA Research Park, and the University Affiliated Research Center.

Dryden Flight Research Center The Dryden Flight Research Center, located at Edwards, CA, is NASA's primary installation for flight research. Since 1946, Dryden's researchers have led the way in major advancements to the design and capabilities of many civilian and military aircraft. Dryden's workforce expertise in aeronautics and in the development of flight research tools and techniques, coupled with the suite of specialized laboratories and facilities needed for flight validation, are key to the development and maturation of new vehicles.

Glenn Research Center The John H. Glenn Research Center, located in Cleveland, OH, develops spaceflight systems and technologies to advance space exploration and maintains leadership in aviation propulsion research. The Center leads the development of the Service Module and Spacecraft Adapter for the Nation's Crew Exploration Vehicle.

Goddard Space Flight Center The Goddard Space Flight Center, located in Greenbelt, MD, expands the knowledge of Earth and its environment, the solar system, and the universe through observations from space. The Center also conducts scientific investigations, develops and operates space systems, and advances essential technologies.

Johnson Space Center The Lyndon B. Johnson Space Center, located in Houston, TX, leads the United States in the human exploration of space. The Center has made major advances in science, technology, engineering, and

medicine and has led the Nation's human space flight programs and projects. It strives to advance the Nation's exploration of the universe with its expertise in medical, biomedical, and life sciences, lunar and planetary geosciences, crew and mission operations, crew health and safety, project management, and space systems engineering. The Center also leads worldwide research in extraterrestrial materials curation and the interaction between humans and robotics, as well as the biology and physiology of humans in space.

Kennedy Space Center The John F. Kennedy Center, located in Florida, is responsible for NASA's space launch operation and spaceport and range technologies. Home to the Space Shuttle fleet and the launch services program, it carries out its primary mission by managing the processing and launch of astronaut crews; the Space Shuttle and associated payloads; International Space Station elements, research experiments, and supplies; and enabling the payload processing of a wide variety of robotics payloads launched on commercial services into space. The Center supports the Space Shuttle and International Space Station programs and serves as NASA's focal point for spaceport and range technology development efforts to provide advanced technologies, systems, and techniques to increase safety and security and reduce the cost of access to space.

Langley Research Center The Langley Research Center, located in Hampton, VA, is renowned for its scientific and technological expertise in aerospace research, systems integration, and atmospheric science. Established 1917 as an aeronautics lab, the Center also has a rich heritage in space and science technologies. The Center conducts critical research in materials and structures; aerodynamics; and hypersonic, supersonic, and subsonic flight; and has developed and validated technologies to improve the effectiveness, capability, comfort, and efficiency of the Nation's air transportation system. It supports the

space exploration program and space operations with systems analysis and engineering, aerosciences, materials and structures, and technology and systems development and testing. The Center continues to have a principal role in understanding and protecting our planet through atmospheric measurement, instruments, missions, and prediction algorithms. In 2003, NASA's Engineering and Safety Center was established at Langley to improve mission safety by performing independent engineering assessments, testing, analysis, and evaluation to determine appropriate preventative and corrective action for problems, trends, or issues across NASA programs and projects.

Marshall Space Flight Center The George C. Marshall Space Flight Center, located in Huntsville, AL, develops and integrates the transportation and space systems required for the Agency's exploration, operations, and scientific missions. It provides the engineering and scientific capabilities to deliver space transportation and propulsion systems, space systems development and integration, scientific and exploration instruments, and basic and applied research. The Center manages the Space Shuttle propulsion elements, the International Space Station, the Ares I crew and Ares V cargo launch vehicles, and the Lunar Precursor Robotic Program. Other programs and projects include the Lunar Science Program, Discovery Program, and Michoud Assembly Facility.

Stennis Space Center The John C. Stennis Center, located near Bay St. Louis, MS, has served as NASA's rocket propulsion testing ground for more than four decades. Today, the Center provides test services not only for America's space program, but also for the Department of Defense and the private sector. The Center's Earth Science Applications Directorate leads NASA's efforts to help solve problems on Earth related to homeland security, agricultural efficiency, disaster preparedness, and coastal management. Through the use of NASA's Earth science research, remote sensing, and other technical capabilities,

the Directorate bridges the gap between Earth science research results and the use of its data to help its partner agencies.

Federally Funded Research and Development Facility

Jet Propulsion Laboratory The Laboratory, which is managed under contract by the California Institute of Technology in Pasadena, CA, develops spacecraft and space sensors and conducts mission operations and ground-based research in support of solar system exploration, Earth science and applications, Earth and ocean dynamics, space physics and astronomy, and information systems technology. It is also responsible for the management of the Deep Space Network in support of NASA projects.

Sources of Information

Contracts and Small Business Activities Inquiries regarding contracting for small business opportunities with NASA should be directed to the Assistant Administrator for Small Business Programs, Room 5C39, NASA Headquarters, 300 E Street SW., Washington, DC 20546. Phone, 202-358-2088.

Employment Direct all general inquiries to the NASA Shared Services Center, Stennis, MS 39529. Phone, 877-677-2123. E-mail, nssc-contactcenter@nasa.gov.

OIG Hotline An individual may report crimes, fraud, waste, and abuse in NASA programs and operations by calling the OIG Hotline (phone, 800-424-9183); by writing to the NASA Inspector General, P.O. Box 23089, L'Enfant Plaza Station, Washington, DC 20026; or by sending an electronic message from the OIG's Web site (Internet, www.hq.nasa.gov/office/oig/hq/cyberhotline.html).

Publications, Speakers, Films, and Exhibit Services Several publications concerning these services can be obtained by contacting the Public Affairs Officer of the nearest NASA Center. Publications include *NASA Directory of Services for the Public*, *NASA Film List*, and *NASA Educational Publications List*.

The headquarters telephone directory and certain publications and picture sets are available for sale from the Superintendent of Documents, Government Printing Office, Washington, DC 20402. Telephone directories for NASA Centers are available only from the Centers. Publications and documents not available for sale from the

Superintendent of Documents or the National Technical Information Service (Springfield, VA 22151) may be obtained from NASA Center's Information Center in accordance with the NASA regulation concerning freedom of information.

Reading Room NASA Headquarters Information Center, Room 1H23, 300 E Street SW., Washington, DC 20546. Phone, 202-358-0000.

For further information, contact the Headquarters Information Center, National Aeronautics and Space Administration, Washington, DC 20546. Phone, 202-358-0000. Internet, www.nasa.gov.

NATIONAL ARCHIVES AND RECORDS ADMINISTRATION

8601 Adelphi Road, College Park, Maryland 20740
Phone, 866-272-6272. Internet, www.archives.gov.

Archivist of the United States	ALLEN WEINSTEIN
Deputy Archivist of the United States	ADRIENNE C. THOMAS
Chief of Staff	DEBRA WALL
Assistant Archivist for Administration	ADRIENNE C. THOMAS, <i>Acting</i>
Assistant Archivist for Information Services	MARTHA MORPHY
Assistant Archivist for Presidential Libraries	SHARON K. FAWCETT
Assistant Archivist for Records Services— Washington, DC	MICHAEL J. KURTZ
Assistant Archivist for Regional Records Services	THOMAS E. MILLS
Director of the Federal Register	RAYMOND A. MOSLEY
Director of Public Affairs and Communications Staff	SUSAN COOPER
Director, Congressional Affairs	DAVID MCMILLEN, <i>Acting</i>
Director, Equal Employment Opportunity and Diversity Programs	ROBERT JEW
Director, Information Security Oversight Office	WILLIAM J. BOSANKO
Director, Policy and Planning Staff	SUSAN M. ASHTIANIE
Executive Director, National Historical Publications and Records Commission	KATHLEEN M. WILLIAMS
General Counsel	GARY M. STERN
Inspector General	PAUL BRACHFELD

[For the National Archives and Records Administration statement of organization, see the *Federal Register* of June 25, 1985, 50 FR 26278]

The National Archives and Records Administration safeguards and preserves the records of our Government, ensuring that the people can discover, use, and learn from this documentary heritage; establishes policies and procedures for managing U.S. Government records; manages the Presidential Libraries system; and publishes the laws, regulations, and Presidential and other public documents.